

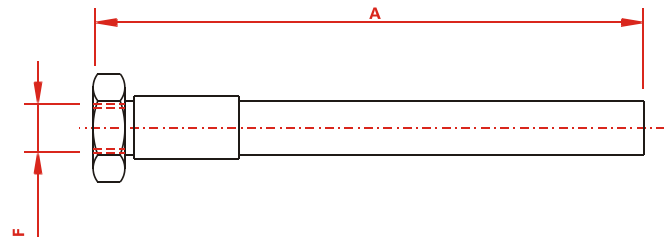
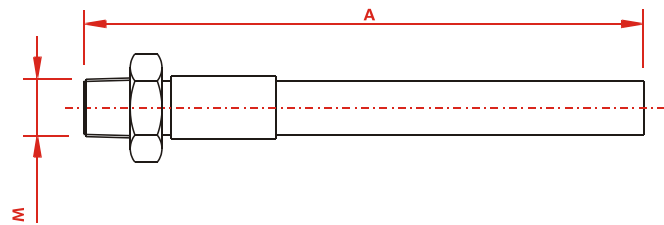
High Pressure Thermoplastic Hoses

700 Kg/Cm²

- We can supply Hoses from 2mm (0.08") to 32mm (5/4") with working pressure of upto 2800 Bar . It is one of the most extensive ranges in the world.
- 360° Swivel End Connections also available on request.
- Hoses with parameters to suit customer's individual specifications (Length, Working Pressure, Hose ID , End Connection Threads & Shapes etc.) available on request.
- Hoses interchangeable with all international brands also available.



LENGTH A METERS	MODEL	END CONNECTION	
		M	F
01	FH T3 01 3T	3/8"NPT	-
	FH T3 01 19		M18X1.5
	FH T3 01 39		3/8"BSP
	FH T3 01 15		1/4"BSP
02	FH T3 02 3T	3/8"NPT	-
	FH T3 02 19		M18X1.5
	FH T3 02 39		3/8"BSP
	FH T3 02 15		1/4"BSP
03	FH T3 03 3T	3/8"NPT	-
	FH T3 03 19		M18X1.5
	FH T3 03 39		3/8"BSP
	FH T3 03 15		1/4"BSP
04	FH T3 04 3T	3/8"NPT	-
	FH T3 04 19		M18X1.5
	FH T3 04 39		3/8"BSP
	FH T3 04 15		1/4"BSP
05	FH T3 05 3T	3/8"NPT	-
	FH T3 05 19		M18X1.5
	FH T3 05 39		3/8"BSP
	FH T3 05 15		1/4"BSP
07	FH T3 07 3T	3/8"NPT	-
	FH T3 07 19		M18X1.5
	FH T3 07 39		3/8"BSP
	FH T3 07 15		1/4"BSP
10	FH T3 10 3T	3/8"NPT	-
	FH T3 10 19		M18X1.5
	FH T3 10 39		3/8"BSP
	FH T3 10 15		1/4"BSP
15	FH T3 15 3T	3/8"NPT	-
	FH T3 15 19		M18X1.5
	FH T3 15 39		3/8"BSP
	FH T3 15 15		1/4"BSP



SPECIFICATIONS	
Internal Dia.	6.3mm
External Dia.	13.3mm
Working Pressure	700 bar
Test Pressure	1400 bar
Burst Pressure	2800 bar
Min. Bending Radius	60mm
Working Temp.	- 40° to 110°C

Note : The right to change any specification without notice is reserved because of constant R&D and product upgradation.

