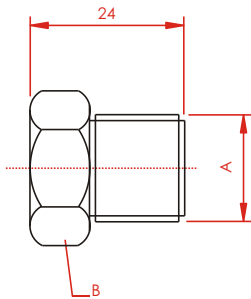


NIPPLE

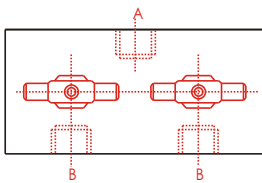
MODEL	A	B	C
BN 18 18	M18x1.5	M18x1.5	22
BN 18 38	3/8" BSP	M18x1.5	22
BN 18 3T	3/8" NPT	M18x1.5	22
BN 18 14	1/4" BSP	M18x1.5	22
BN 38 18	M18x1.5	3/8" BSP	22
BN 38 38	3/8" BSP	3/8" BSP	22
BN 38 3T	3/8" NPT	3/8" BSP	22
BN 38 14	1/4" BSP	3/8" BSP	22
BN 3T 18	M18x1.5	3/8" NPT	22
BN 3T 38	3/8" BSP	3/8" NPT	22
BN 3T 3T	3/8" NPT	3/8" NPT	22
BN 3T 14	1/4" BSP	3/8" NPT	22
BN 14 18	M18x1.5	1/4" BSP	22
BN 14 38	3/8" BSP	1/4" BSP	22
BN 14 14	1/4" BSP	1/4" BSP	17
BN 14 3T	3/8" NPT	1/4" BSP	22



PLUG

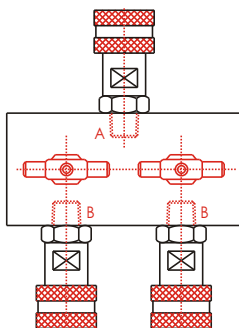
MODEL	A	B
BP 18	M18x1.5	22
BP 38	3/8" BSP	22
BP 3T	3/8" NPT	22
BP 14	1/4" BSP	17

### OIL DISTRIBUTOR WITH SHUT OFF VALVE



MODEL	A	B	NO. OF PORTS		
			A	B	
BM N 01 02	3/8" NPT	3/8" NPT	1	2	FOR SINGLE ACTING
BM N 01 03	3/8" NPT	3/8" NPT	1	3	
BM N 01 04	3/8" NPT	3/8" NPT	1	4	
BM N 01 06	3/8" NPT	3/8" NPT	1	6	
BM N 01 08	3/8" NPT	3/8" NPT	1	8	FOR DOUBLE ACTING
BM N 02 04	3/8" NPT	3/8" NPT	2	4	
BM N 02 06	3/8" NPT	3/8" NPT	2	6	
BM N 02 08	3/8" NPT	3/8" NPT	2	8	

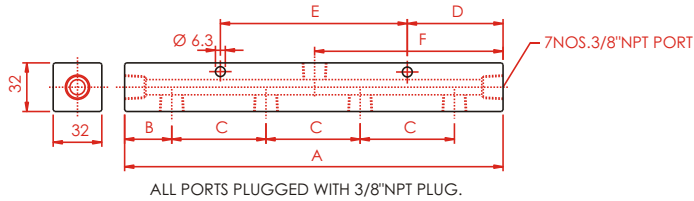
### OIL DISTRIBUTOR WITH QUICK COUPLERS



MODEL	A	B	NO. OF PORTS		
			A	B	
BM C 01 02	3/8" NPT	3/8" NPT	1	2	FOR SINGLE ACTING
BM C 01 03	3/8" NPT	3/8" NPT	1	3	
BM C 01 04	3/8" NPT	3/8" NPT	1	4	
BM C 01 06	3/8" NPT	3/8" NPT	1	6	
BM C 01 08	3/8" NPT	3/8" NPT	1	8	FOR DOUBLE ACTING
BM C 02 04	3/8" NPT	3/8" NPT	2	4	
BM C 02 06	3/8" NPT	3/8" NPT	2	6	
BM C 02 08	3/8" NPT	3/8" NPT	2	8	

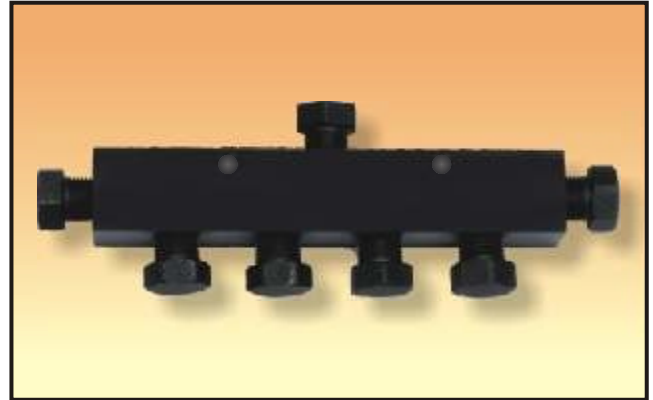
Note : The right to change any specification without notice is reserved because of constant R&D and product upgradation.

## 7 PORT MANIFOLD

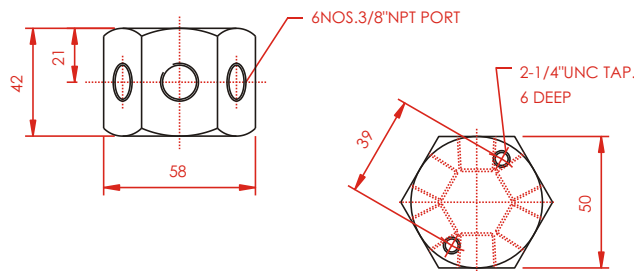


ALL PORTS PLUGGED WITH 3/8"NPT PLUG.

MODEL	Dimension in mm					
	A	B	C	D	E	F
OM-64	176	31	38	50	80	88
OM-65	367	31	102	83	205	183



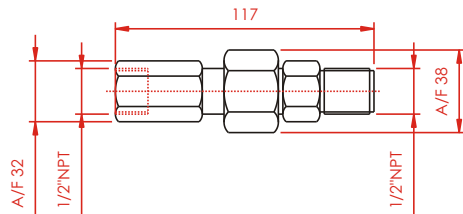
## 6 PORT HEXAGON MANIFOLD MODEL NO. OM-77



ALL PORTS PLUGGED WITH 3/8"NPT PLUG.



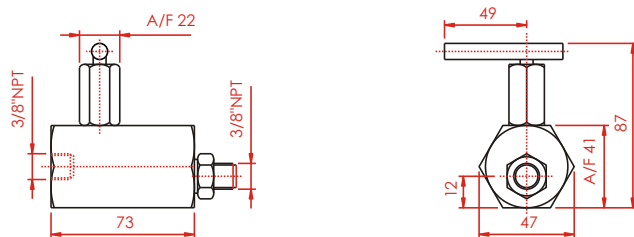
## AUTO DAMPER VALVE MODEL NO. OW-20



To be used when gauge pressure must be monitored during high cycle applications. Creates a flow resistance when load is released suddenly. No adjustment is necessary. Other connection sizes are also available on request.



## MANUALLY OPERATED CHECK VALVE MODEL NO. OW-76



Used for load holding application with single and double acting cylinders. Valve is manually operated to allow oil to flow back to tank when cylinders retract.



Note : The right to change any specification without notice is reserved because of constant R&D and product upgradation.