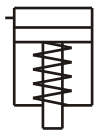
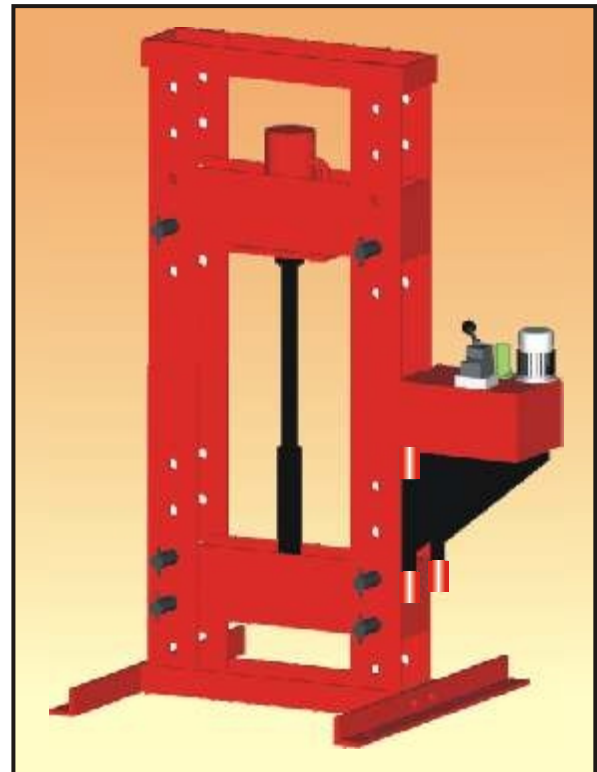
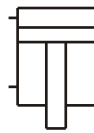


- Quality welded H-Frame for maximum strength and stability.
- Manual, Air or Electric driven power sources.
- Available with single or double-acting cylinder.
- Side movement of cylinder (on 10 and 25 ton).
- Unique "hydrajust" bed positioning device on 50 & 100 ton Presses equipped with double-acting cylinders.

SINGLE ACTING



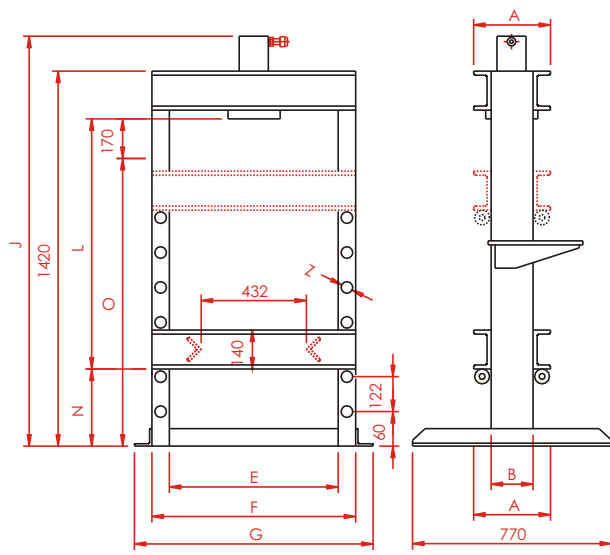
DOUBLE ACTING



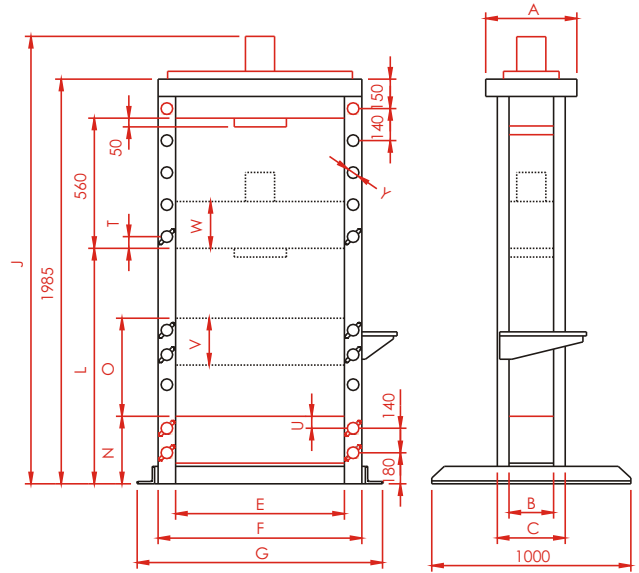
PRESS MODEL NO.	PRESS CAPACITY TON (kN)	MAXIMUM BED DAY LIGHT	MAXIMUM BED WIDTH	POWER SOURCES					CYLINDER		APPROX. SPEED* (mm/sec)		
				TYPE			VALVE				STROKE (MM)	RADID ADVANCE	PRESSING
				MAN.	ELEC.	AIR	MAN.	ELEC.					
OEWMP-1017	10 (100)	1025	510	●			●		●		150	(8)	(1.3)
OEWMP-1020		1025	510	●			●		●		250	(8)	(1.3)
OEWAP-1016		1025	510			●	●		●		150	9.1	1
OEWAP-1020		1025	510			●	●		●		250	9.1	1
OEWMP-1130		1025	510	●			●			●	250	(8)	(1.3)
OEWMP-2526	25 (250)	1025	510	●			●		●		150	(14.5)	(0.7)
OEWMP-2530		1025	510	●			●		●		250	(14.5)	(0.7)
OEWAP-2630		1025	510			●	●		●		250	3.6	0.4
OEWEP-2590		1025	510		●		●		●		250	13	2.2
OEWEP-2676		1025	510		●		●		●		150	13	2.2
OEWMP-5026	50 (500)	1335	800	●			●		●		150	(7.4)	(0.3)
OEWMP-5236		1335	800	●			●			●	150	(7.4)	(0.3)
OEWEP-5473		1335	800		●		●			●	300	7	1.1
OEWEP-5433		1335	800		●		●			●	300	15	2.3
OEWEP-5453		1335	800		●			●		●	300	15	2.3
OEWMP-10046	100 (1000)	1145	1000	●			●			●	150	(3.6)	(0.2)
OEWEP-10086		1145	1000		●		●			●	150	3.5	0.5
OEWEP-10033		1145	1000		●		●			●	300	7.9	1.1
OEWEP-10053		1145	1000		●			●		●	300	7.9	1.1

* (...) = ADVANCE SPEED IN MM PER HANDPUMP STROKE.

Note : The right to change any specification without notice is reserved because of constant R&D and product upgradation.



10 TON & 25 TON



50 TON & 100 TON

PRESS MODEL Number	PRESS CAPACITY TON (KN)	PRESS MODEL Number	CYLINDER MODEL NUMBER	H-FRAME PRESS DIMENSIONS (mm)																APPROX. WT. KG.
				A	B	C	E	F	G	J	L	N	O	T	U	V	W	Y	Z	
OEWP-1017	10 (100)	CH27022	XK010150	260	140	-	510	630	710	1481	1042	198	1070	-	-	-	-	-	32	160
OEWP-1020		CH27022	XK010250	260	140	-	510	630	710	1611	1042	198	1070	-	-	-	-	-	32	170
OEWP-1016		CP17100	XK010150	260	140	-	510	630	710	1481	1042	198	1070	-	-	-	-	-	32	165
OEWP-1020		CP17100	XK010250	260	140	-	510	630	710	1611	1042	198	1070	-	-	-	-	-	32	182
OEWP-1130		CH271004	XP010250	260	140	-	510	630	710	1611	1042	198	1070	-	-	-	-	-	32	190
OEWP-2526	25 (250)	CH27100	XK025150	260	140	-	510	630	710	1505	1042	198	1070	-	-	-	-	-	32	180
OEWP-2530		CH27100	XK025250	260	140	-	510	630	710	1641	1042	198	1070	-	-	-	-	-	32	198
OEWP-2630		CP17100	XK025250	260	140	-	510	630	710	1641	1042	198	1070	-	-	-	-	-	32	200
OEWP-2590		OPESA3KT	XK025250	260	140	-	510	630	710	1641	1042	198	1070	-	-	-	-	-	32	200
OEWP-2676		OPESA3KT	XK025150	260	140	-	510	630	710	1505	1042	198	1070	-	-	-	-	-	32	305
OEWP-5026	50 (500)	CH27100	XK050150	312	252	292	800	1000	1180	2023	1175	400	420	100	80	300	300	42	32	490
OEWP-5236		CH271004	XP050150	312	252	292	800	1000	1180	2068	1175	400	420	100	80	300	300	42	32	501
OEWP-5473		OPEDA3KT	XP050300	312	252	292	800	1000	1180	2195	1175	400	420	100	80	300	300	42	32	540
OEWP-5433		OPEDB4KT	XP050300	312	252	292	800	1000	1180	2195	1175	400	420	100	80	300	300	42	32	560
OEWP-5453		OPEDB8KT	XP050300	312	252	292	800	1000	1180	2195	1175	400	420	100	80	300	300	42	32	568
OEWP-10046	100 (1000)	CH271004	XP100150	432	332	392	1000	1240	1440	2053	1105	520	280	170	60	400	400	52	40	1019
OEWP-10086		OPEDA3KT	XP100150	432	332	392	1000	1240	1440	2053	1105	520	280	170	60	400	400	52	40	1031
OEWP-10033		OPEDB4KT	XP100300	432	332	392	1000	1240	1440	2144	1105	520	280	170	60	400	400	52	40	1077
OEWP-10053		OPEDB8KT	XP100300	432	332	392	1000	1240	1440	2144	1105	520	280	170	60	400	400	52	40	1085

Note : The right to change any specification without notice is reserved because of constant R&D and product upgradation.

