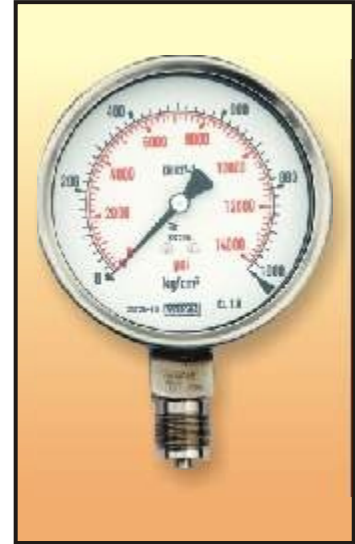


- Pressure gauge is always recommended to safeguard against overloading of the hydraulic system.
- Calibrated to read in kg/cm² and psi.
- Fast and easy installation.
- Pressure gauges calibrated to read directly in tonnes can be provided on request.



MODEL	PRESSURE RANGE		END CONNECTION	GAUGE DIA (mm)	GLYCERINE FILLED
	Kg/cm ²	psi			
PG 10 10 P	0-1000	0-14000	1/2" BSP (M)	100	NO
PG 10 10 G	0-1000	0-14000	1/2" BSP (M)	100	YES

Note : The right to change any specification without notice is reserved because of constant R&D and product upgradation.

